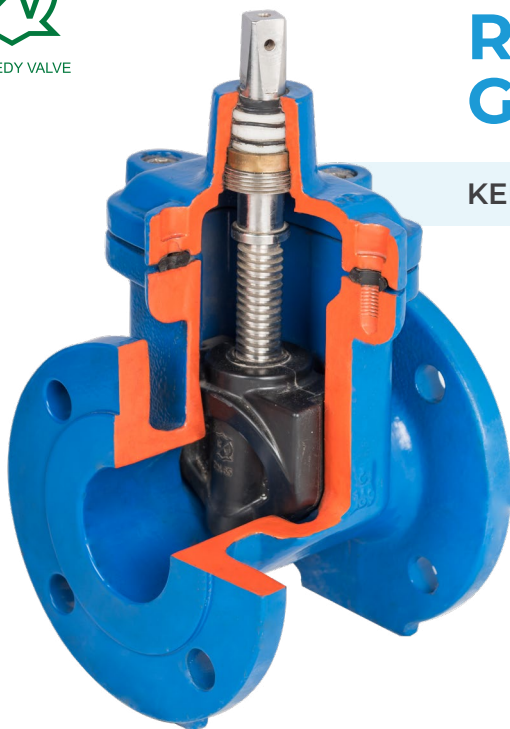


RESILIENT SEATED GATE VALVES

KENNEDY SERIES 31 to IS/BS/EN/ISO Standards



Kennedy Gate Valves with their unique features have been used in the water and fire protection industries since 1877. Our Series 31 Gate valves conform to IS / BS / EN / ISO standards and have been designed to maintain the high quality and integrity of existing designs but incorporates many superior features like unique integral wedge nut and a maintenance free triple stem seal design. It is NSF compliant for 60°C. Series 31 Gate Valves are made in Ductile Iron body with wedges totally encapsulated in Rubber, offering bubble tight shut off. Valves are designed with smooth unobstructed flow paths and are free of pockets, cavities and depressions in the seat area.

Valves are suitable for water and neutral liquids to a maximum temperature of 70° C.

GENERAL SPECIFICATIONS

Design & Test Standards: IS14846/BS5163/EN1171/ EN1074 - 1&2.

Type: Resilient Seated Ductile Iron Gate Valves Non Rising Stem.

Sizes: DN 50 - 800 Resilient Seated, and above up to 1800 mm Metal Seated Gate Valve are Available on Request.

Working Pressure: 10 Bar / 16 Bar / 25 Bar Available on Request.

MODELS

311: Face to Face ISO 5752 Series 3

314: Face to Face ISO 5752 Series 14

315: Face to Face ISO 5752 Series 15

FACE TO FACE

IS 14846 / BS 5163 / DIN 3202 - F4 /

EN 558 / ISO 5752

FLANGES

EN 1092-2, IS 1538 / IS 9523

TEST PRESSURE

EN 1074-1&2, IS 14846

Seat Test : 1.1 x PN

Body Test :1.5 x PN

COATING

Fusion bonded non-toxic epoxy coating NSF 61 / WRAS 300 micron

Bolts are sealed with hot melt

MATERIAL SPECIFICATIONS

Body & Bonnet : Ductile Iron - GGG50 / GGG40

Wedge : EPDM encapsulated Ductile Iron

Stem : Stainless Steel 316 & 420

Wedge Nut : Copper Alloy, (Ph.Bronze)

Bolt & Nuts : Stainless Steel A4

O Rings : EPDM

Thrust Collar : Copper Alloy, (Ph.Bronze)

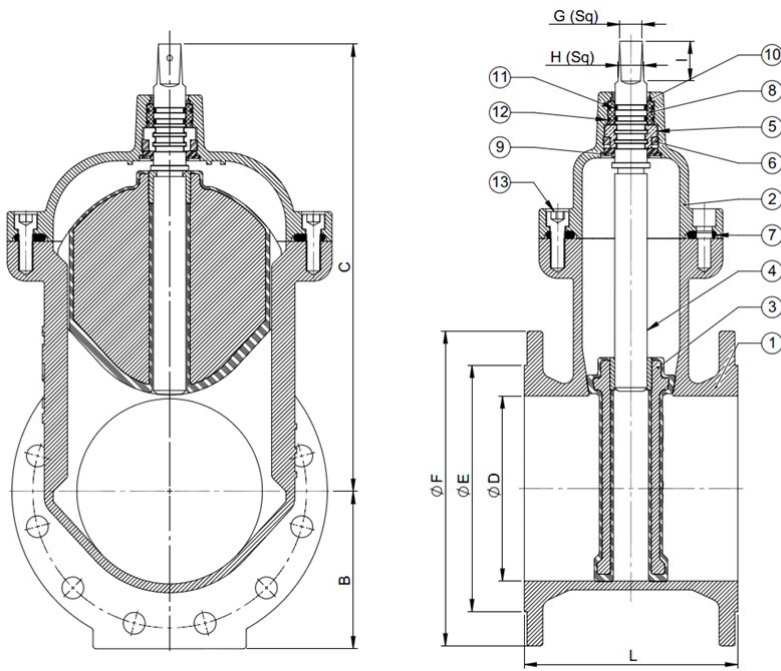
Bonnet Gasket : EPDM

Stem Bearing : Polyamide Polymer

Coating : Fusion Bonded Epoxy 300 µm

EPDM Rubber with NSF 61 / WRAS approval suitable for potable water. Please check with us for other material combinations.

DIMENSIONS AND PART LIST - RS GATE VALVE SERIES 31



COMPONENTS LIST

1. Body
2. Bonnet
3. Wedge
4. Stem
5. Thrust Collar
6. Thrust Collar Nut
7. Gasket
8. Bush
9. Seal
10. End Seal
11. O Ring Stem
12. O Ring Bush
13. Socket Head Cap Screw

DIMENSIONS (MM)

SIZE DN	L			B	C	ØD	ØE	ØF	G (SQ)	H (SQ)	I	WEIGHT APPROX. (KG.)		
	MODEL 314	MODEL 311	MODEL 315									MODEL 314	MODEL 311	MODEL 315
50	150	178	250	82.5	217	50	99	165	13.5	16	26.5	12	12	13
65	170	190	270	92.5	234	65	118	185	17	20	34	15	15	16
80	180	203	280	100	261	80	132	200	17	20	34	16	17	18
100	190	229	300	110	299	100	156	220	19	22	38	20	21	23
125	200	254	325	125	355	125	184	250	19	22	38	33	35	36
150	210	267	350	142.5	393	150	211	285	19	22	38	40	42	45
200	230	292	400	170	483	200	266	340	24	28	43	60	63	68
250	250	330	450	200	568	250	319	400	27	31	47	84	89	96
300	270	356	500	227.5	686	300	370	455	27	31	47	148	157	173
350	290	381	550	260	762	350	429	520	32	37	55	205	210	235
400	310	406	600	290	842	400	480	580	32	37	55	254	260	290

450 to 800 Resilient Seated, 700 to 1800mm Metals seated Available on Request.

Kennedy and MIPL are divisions of McWane Inc. USA

The specifications and material grades shown are subject to revision without notice based on our product improvement programme